



THE UNIVERSITY
of NORTH CAROLINA
at CHAPEL HILL

Collaboration is a “work of art”:
The design and implementation of
an intentional IPE activity.

Meg Zomorodi, PhD, RN
Madeline Neal, BS



NATIONAL CENTER for
INTERPROFESSIONAL
PRACTICE and EDUCATION



JOINTLY ACCREDITED PROVIDER™
INTERPROFESSIONAL CONTINUING EDUCATION

This activity has been planned and implemented by the National Center for Interprofessional Practice and Education. *In support of improving patient care, the National Center for Interprofessional Practice and Education is jointly accredited by the Accreditation Council for Continuing Medical Education (ACCME), the Accreditation Council for Pharmacy Education (ACPE), the American Nurses Credentialing Center (ANCC), and the Association of Social Work Boards (ASWB) to provide continuing education for the healthcare team.*

Physicians: The National Center for Interprofessional Practice and Education designates this live activity for a maximum of **1 AMA PRA Category 1 Credits™**.

Physician Assistants: The American Academy of Physician Assistants (AAPA) accepts credit from organizations accredited by the ACCME.

Nurses: Participants will be awarded up to **1** contact hours of credit for attendance at this workshop.

Nurse Practitioners: The American Academy of Nurse Practitioners Certification Program (AANPCP) accepts credit from organizations accredited by the ACCME and ANCC.

Pharmacists: This activity is approved for **1** contact hours (.1 CEU) UAN: JA4008105-0000-19-070-L04-P

IPCE: This activity was planned by and for the healthcare team, and learners will receive **1** Interprofessional Continuing Education (IPCE) credits for learning and change



NATIONAL CENTER for
INTERPROFESSIONAL
PRACTICE and EDUCATION



JOINTLY ACCREDITED PROVIDER™
INTERPROFESSIONAL CONTINUING EDUCATION

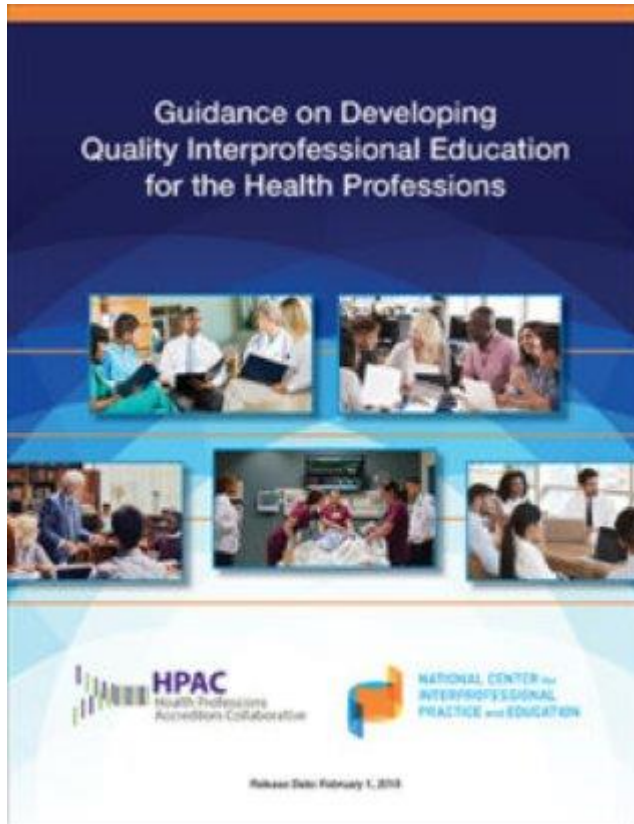
Disclosures:

In accordance with the Accreditation Council for Continuing Medical Education's Standards for Commercial Support, adopted by the Joint Accreditors for Interprofessional Continuing Education, the National Center for Interprofessional Practice and Education has a **conflict of interest policy** that requires that all individuals involved in the development of activity content disclose their relevant financial relationships with commercial interests. All potential conflicts of interest that arise based upon these financial relationships are resolved prior to the educational activity.

Madeline Neal, Meg Zomorodi
Christi Barbee, Margaret Robinson
Soshana Sicks, Elena Umland

declare no vested interest in or affiliation with any commercial interest offering financial support for this interprofessional continuing education activity, or any affiliation with a commercial interest whose philosophy could potentially bias their presentation.

Getting Started



Key elements for intentionally designed interprofessional experiences:

- outcomes based goals
- deliberate design
- assessment



Purpose of Activity

Goal: Provide fun and interactive orientation activity to enhance engagement and readiness for interprofessional education and practice in first year students.



Development

1. Scan university resources
2. Consult with Ackland Art Museum
3. Map activities to objectives (Table 1)
4. Recruit co-facilitators
5. Develop debrief questions



Table 1: Activities and Learning Objectives

Activity	Objective	IPEC Domain
Personal Reflection	Discuss how seeing and thinking differently can relate to an individual's future as a learner and ultimately as a healthcare professional.	Roles and Responsibilities for Collaborative Practice
Back-to-Back Drawing	Describe the ways we listen to what others say.	Interprofessional Communication Practices & Interprofessional Teamwork and Team-based Practice
Close Looking and Collective Problem Solving	Discuss ways we validate and/or seek understanding while talking to others.	Interprofessional Communication Practices; Values/Ethics for Interprofessional Practice; & Roles and Responsibilities for Collaborative Practice



Implementation: Pre-event

- Create online registration form
 - Name
 - Department
 - Time and date preference
- Recruitment blast
- Reminder emails
- Group formation (Table 2)



Group Formation

Table 2: Timeslots and Student Distribution

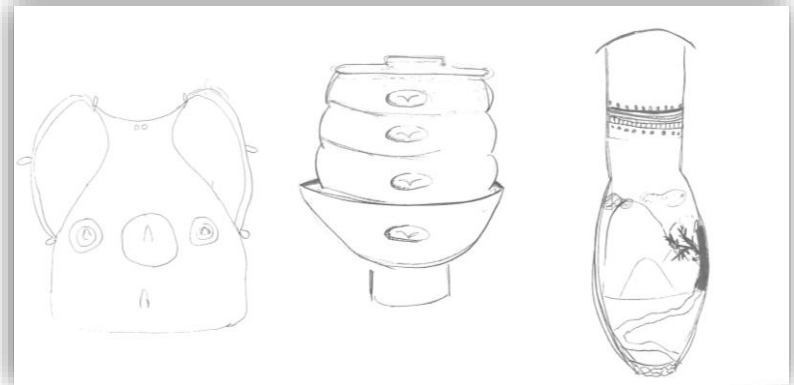
Date	Time	Student Distribution
Friday, August 17	2:30-4:30	7-med 8-pharm, 3-nursing, 1- public health
Friday, August 17	4:30-6:30	10-med 10-pharm
Friday, August 24	2:30-4:30	4 -med, 5-pharm, 3-nursing, 14 dent, 2-public health
Friday, August 24	4:30-6:30	4-med 5-pharm, 11-dent, 2- public health, 2-allied health

Name	Department
John	Dentistry
Sally	Dentistry
Kamal	Medicine
Mark	Nursing
Kevin	Pharmacy
Zach	Pharmacy
Aliyah	Pharmacy
Zach	Pharmacy



Implementation: Event

- Pre-assessment survey (Dow)
- Welcome and introductions
- Activity Rounds
- Facilitated debrief



Examples of Back-to-Back Drawings



Close Looking & Collective Problem Solving



THE UNIVERSITY
of NORTH CAROLINA
at CHAPEL HILL

Implementation: Post Event

- Assessment survey
 - Dow instrument
 - open-ended/feedback
- Pizza Party



What We Learned

- Students are eager to mingle with students from other health professions

"I see myself working in clinical settings with other health professionals and I wanted to start fostering those relationships now."

- Students gained an appreciation for other's perspectives

"I was surprised at how much detail we were able to pick up on as a group. Had I been looking at the picture alone (...) I wouldn't have noticed half the things that were described and identified as a group."

- Students enjoyed the activity

"I loved how sincere and engaged all participants were."



What We Learned

- Orientation schedules and first day schedules across schools are not in sync.
- UNC has many resources for *new* and *exciting* activities!



THE UNIVERSITY
of NORTH CAROLINA
at CHAPEL HILL

THANK YOU!



unc_ipe@unc.edu



ipe4unc



ipe4unc



ipep.unc.edu



THE UNIVERSITY
of NORTH CAROLINA
at CHAPEL HILL