



LEADING INTERPROFESSIONALLY®

PREPARING STUDENTS FOR PRACTICE
TRANSFORMATION

#LEADINGINTEPROFESSIONALLY



NATIONAL CENTER for INTERPROFESSIONAL PRACTICE and EDUCATION



JOINTLY ACCREDITED PROVIDER™
INTERPROFESSIONAL CONTINUING EDUCATION

This activity has been planned and implemented by the National Center for Interprofessional Practice and Education. *In support of improving patient care, the National Center for Interprofessional Practice and Education is jointly accredited by the Accreditation Council for Continuing Medical Education (ACCME), the Accreditation Council for Pharmacy Education (ACPE), and the American Nurses Credentialing Center (ANCC), to provide continuing education for the healthcare team.*

Physicians: The National Center for Interprofessional Practice and Education designates this live activity for a maximum of **1.5 AMA PRA Category 1 Credits™**.

Physician Assistants: The American Academy of Physician Assistants (AAPA) accepts credit from organizations accredited by the ACCME.

Nurses: Participants will be awarded up to **1.5** contact hours of credit for attendance at this workshop.

Nurse Practitioners: The American Academy of Nurse Practitioners Certification Program (AANPCP) accepts credit from organizations accredited by the ACCME and ANCC.

Pharmacists: This activity is approved for **1.5** contact hours (.15 CEU) UAN: JA4008105-0000-18-067-L04-P



NATIONAL CENTER for
INTERPROFESSIONAL
PRACTICE and EDUCATION



JOINTLY ACCREDITED PROVIDER™
INTERPROFESSIONAL CONTINUING EDUCATION

Disclosures:

The National Center for Interprofessional Practice and Education has a conflict of interest policy that requires disclosure of financial relationships with commercial interests.

Karen Saewert, Gerri Lamb, and Bonnie Ervin

do not have a vested interest in or affiliation with any corporate organization offering financial support for this interprofessional continuing education activity, or any affiliation with a commercial interest whose philosophy could potentially bias their presentation.



NATIONAL CENTER for
INTERPROFESSIONAL
PRACTICE and EDUCATION



JOINTLY ACCREDITED PROVIDER™
INTERPROFESSIONAL CONTINUING EDUCATION

All workshop participants:

- Scan your badge barcode or sign in to each workshop
- Complete workshop evaluations (paper) and end-of-Summit evaluation (electronic)

Those who purchase CE credit:

- MUST sign in to receive credit
- Will be sent a certificate after the Summit

****If you would like CE credit but have not purchased it, see Registration

PRESENTERS

Karen J. Saewert, PhD, RN, CPHQ, ANEF

Clinical Professor | Senior Director, Academic Innovation | Evaluation Lead (CAIPER) |
Arizona State University | College of Nursing and Health Innovation | ASU Center for Advancing
Interprofessional Practice, Education and Research (CAIPER)

Co-Principal Investigator and Interprofessional Leadership Development Lead

Gerri Lamb, PhD, RN, FAAN

Professor | Director, ASU CAIPER | Arizona State University | College of Nursing and Health Innovation |
ASU Center for Advancing Interprofessional Practice, Education and Research (CAIPER)

Organizational Partner and Liaison ®

Bonnie Ervin, MSW

Instructor, Honors Faculty (ASU School of Social Work) | Field Instructor and Outreach Director (SHOW) | Arizona
State University (ASU) | College of Public Service and Community Solutions | School of Social Work | Student Health
Outreach for Wellness (SHOW) Community Initiative

Practice-Education Partner and Lead Practice Preceptor

COLLABORATORS

- **Liz Harrell, DNP, PHMNP-BC** | Clinical Assistant Professor | Director, Student Health Outreach for Wellness (SHOW) Community Initiative | Arizona State University | College of Nursing and Health Innovation | Co-Principal Investigator and Project Director
- **Jinnette Senecal, MEd, BSBA** | Manager, Instructional Design, Academic Innovation | Education Lead (CAIPER) | Arizona State University | College of Nursing and Health Innovation | ASU Center for Advancing Interprofessional Practice, Education and Research (CAIPER)
- **Robert G. Kaplan, MM** | Professor | ASU Herberger Institute for Design and the Arts | Arizona State University | School of Film, Dance and Theater | Organizational Partner and Interprofessional Leadership Development Team Member
- **Brooke Martinez, BHT, PSS** | Clinician | The Crossroads, Inc. | Community-Based Practice Partner and Interprofessional Leadership Development Team Member
- **Jeffrey P. Foucrier, PT, DPT, OCS, CMTPT** | Assistant Clinical Professor | Doctor of Physical Therapy Program | Northern Arizona University – Biomedical Campus | Practice-Education Partner and Interprofessional Leadership Development Team Member
- **Pooja Paode, MS** | Faculty Associate and Research Project Coordinator | Arizona State University | College of Health Solutions | Graduate Student Representative to Interprofessional Leadership Development Team
- **Heidi Sanborn, DNP, RN, CNE** | Clinical Assistant Professor | Arizona State University | College of Nursing and Health Innovation | Graduate Student Representative to Interprofessional Leadership Development Team
- **Michael Moramarco, MA** | Project Manager | ASU Center for Advancing Interprofessional Practice, Education and Research (CAIPER) | Arizona State University | College of Nursing and Health Innovation

FUNDING

National Center for Interprofessional Practice and Education,
Accelerating Interprofessional Community-Based Education and
Practice Program

Robert Wood Johnson Foundation

The John A. Hartford Foundation

Josiah Macy Jr. Foundation

Gordon and Betty Moore Foundation

Proposal No. FP00008530/Agreement/Sub-award P005533501

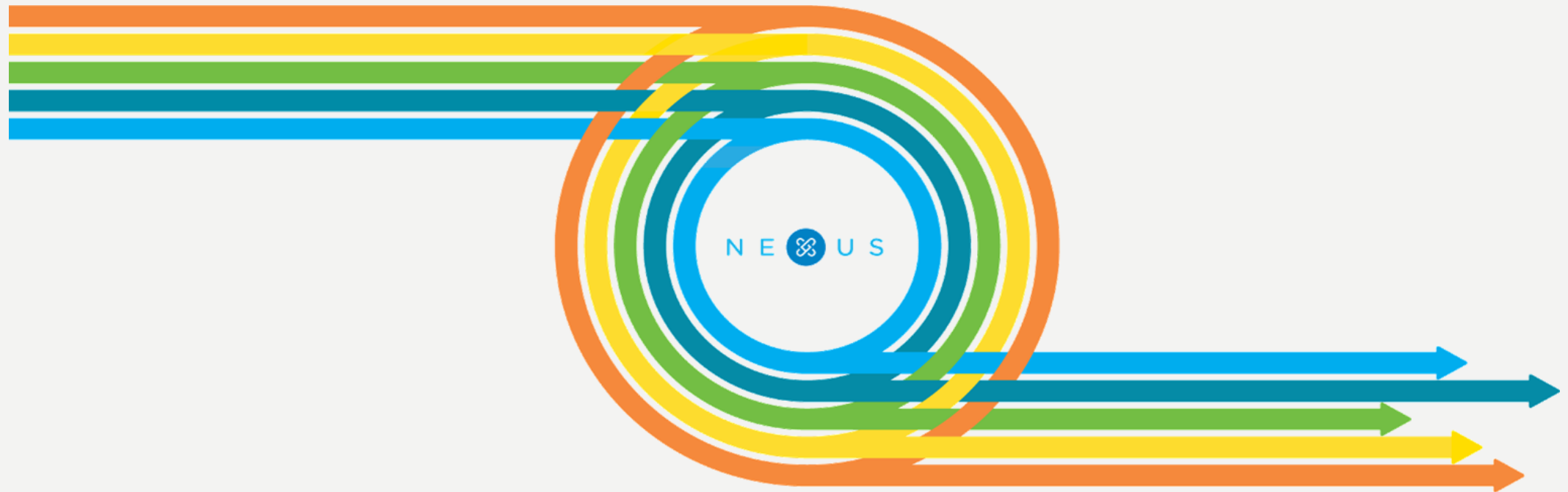
and

The Crossroads, Inc.



NEXUS SUMMIT | JULY 29-31, 2018 | MINNEAPOLIS

CREATING RESULTS: INTERPROFESSIONAL VISION TO ACTION



- ✓ Realizing opportunities for new models of practice and education program development.
- ✓ Building resilient teams for changing times.

OBJECTIVES

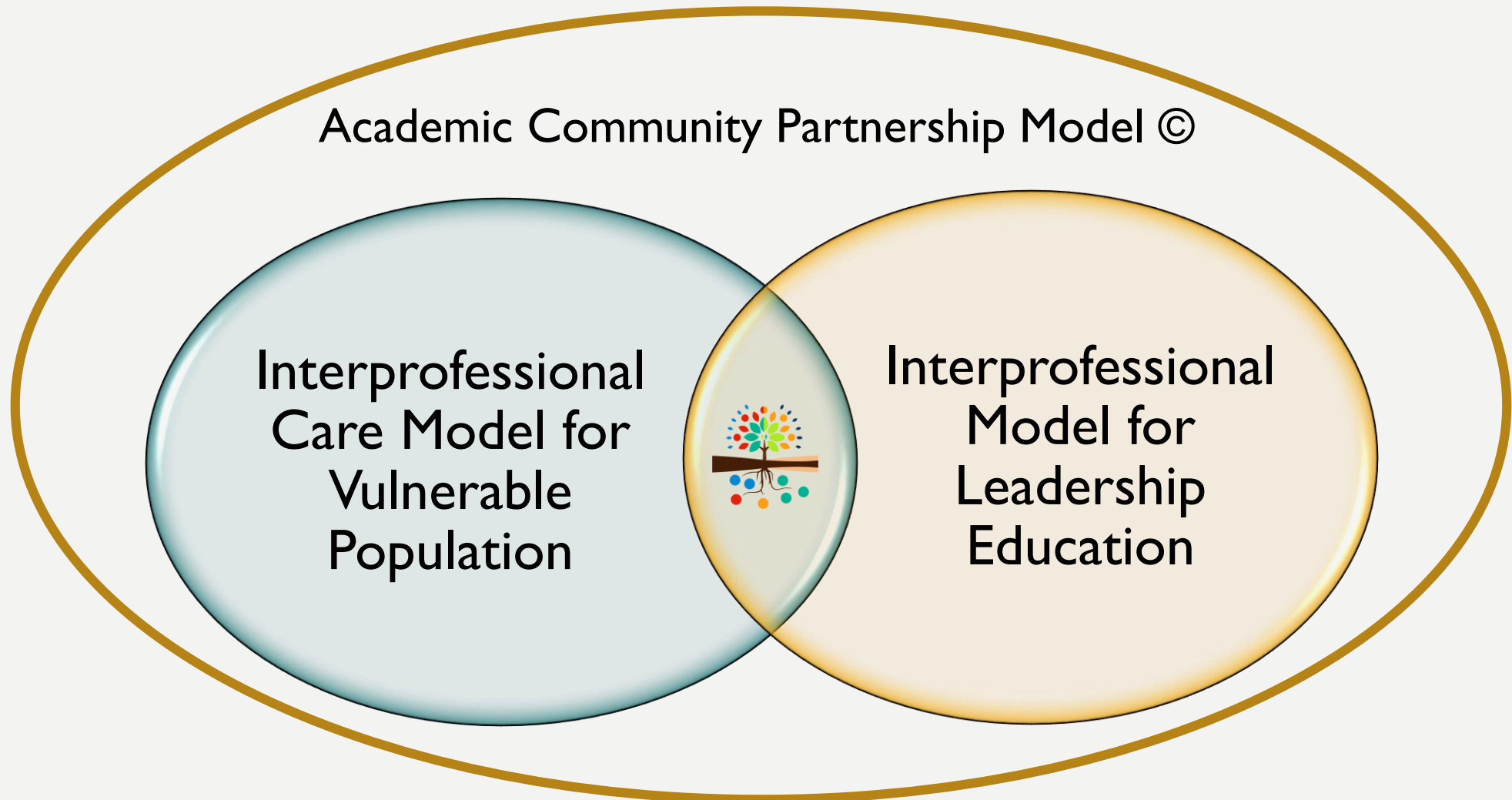
1. Experience the process of crosswalking IPEC® and leadership competencies.
2. Create a competency-based experiential learning activity for leadership preparation.
3. Explore strategies to build incremental learning activities that prepare students for leading interprofessionally.

STRATEGIES

- Exercise in IPEC® - Leadership Competency Crosswalk
- Practice Competency-Based Leadership Exercises

OUR VISION

ACCELERATING INTERPROFESSIONAL COMMUNITY-BASED PRACTICE

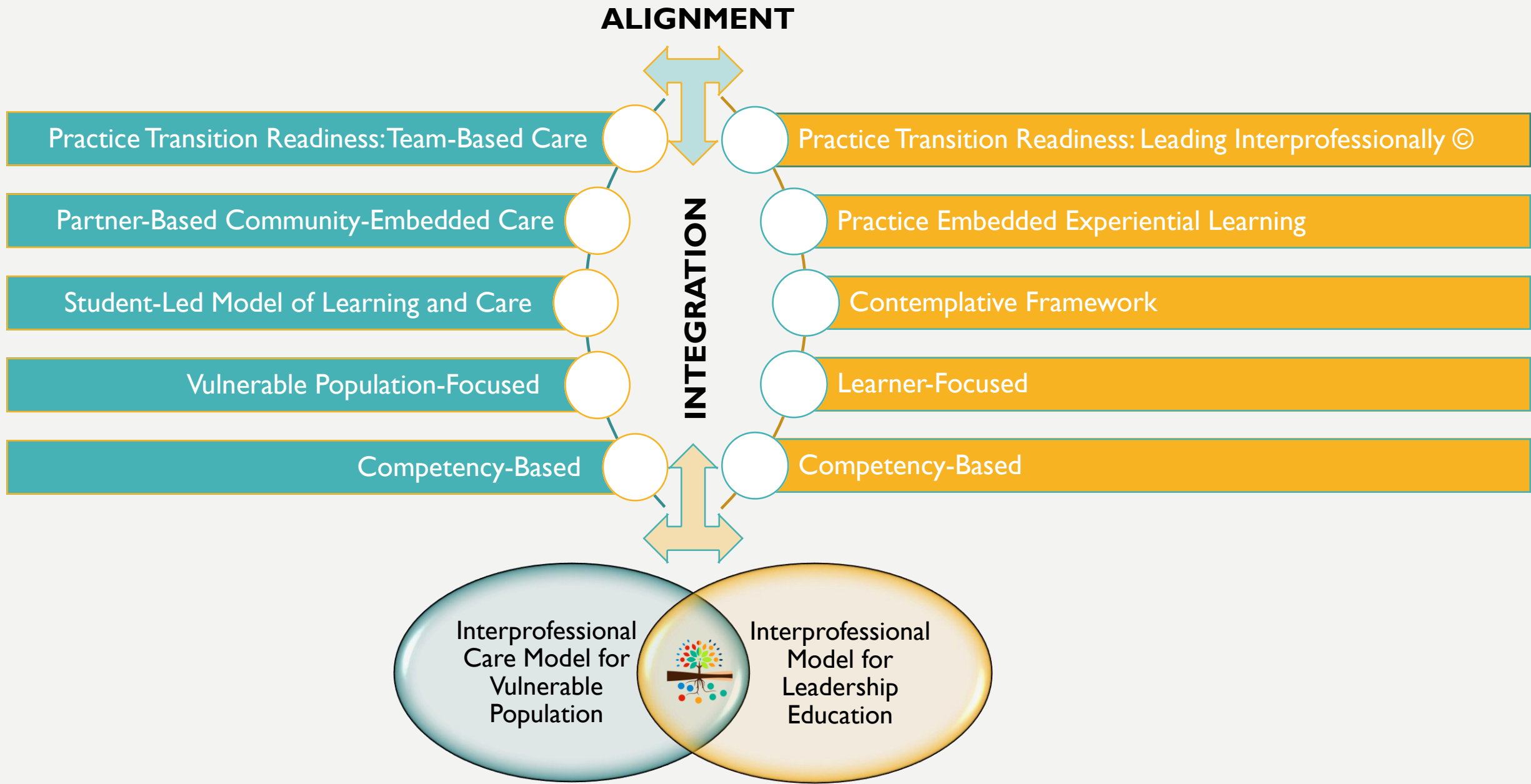


INTERPROFESSIONAL CARE MODEL

- Practice Transition Readiness: Team-Based Care
- Partner-Based Community-Embedded Care
- Student-Led Model of Learning and Care
- Vulnerable Population-Focused
- Competency-Based

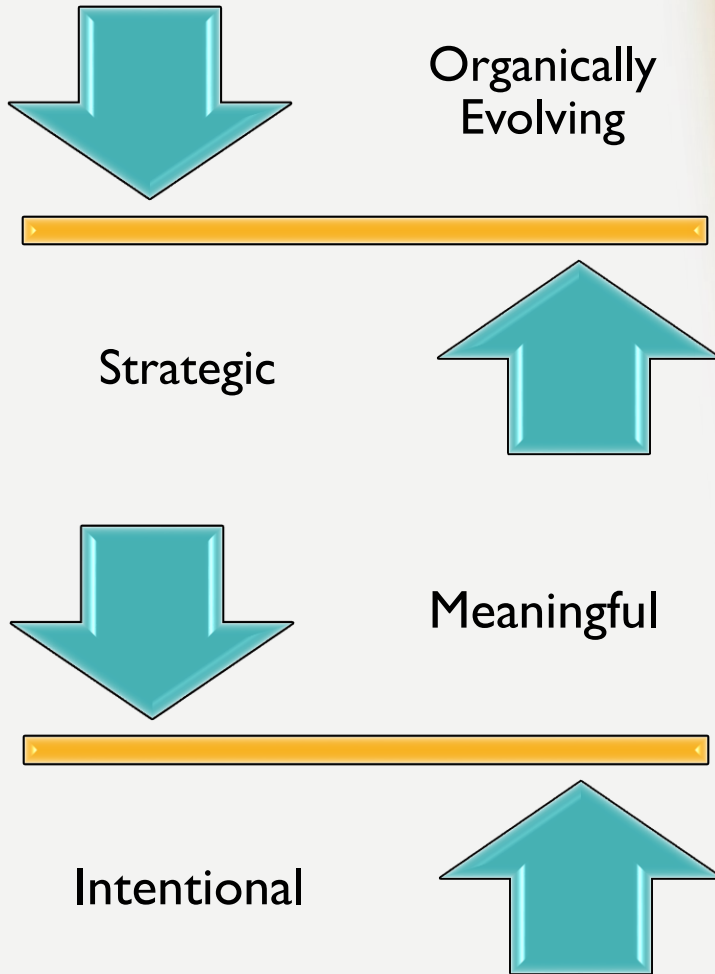
INTERPROFESSIONAL LEADERSHIP EDUCATION

- Practice Transition Readiness: Leading Interprofessionally ©
- Practice Embedded Experiential Learning
- Contemplative Framework
- Learner-Focused
- Competency-Based



ACADEMIC COMMUNITY PARTNERSHIP MODEL©

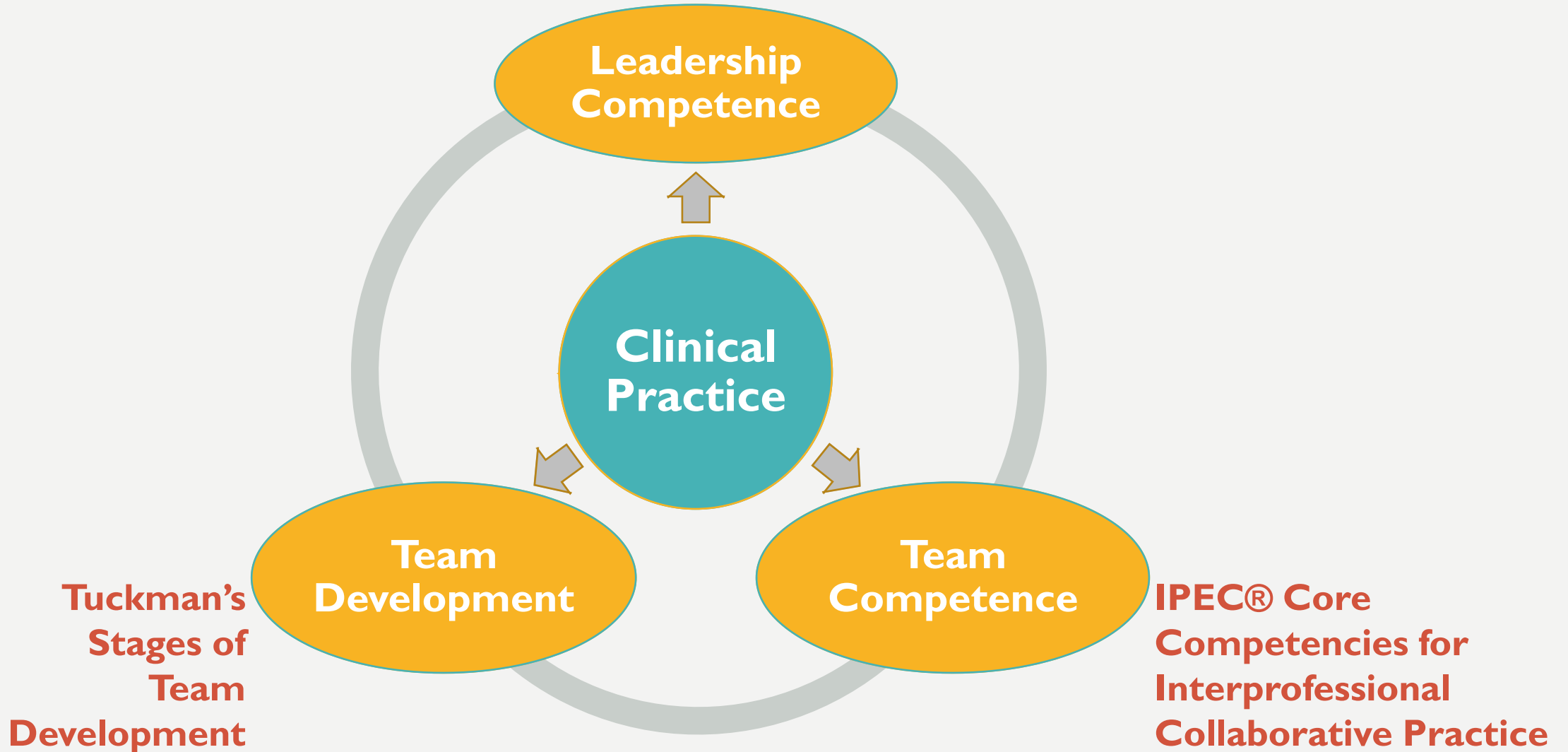
OUR NEXUS PARTNERSHIP “SELL”



- **S**upports ongoing professional development.
- **E**ducates a next generation of health professionals.
- **L**earners think and act differently than before.
- **L**earning organization culture.

CONTEMPLATIVE LEARNING FRAMEWORK

**Kouzes and Posner's Five Practices
of Exemplary Leadership®**



INTERPROFESSIONAL LEADERSHIP

Self-aware in relationship with others. | Present. | Clear. | Confident. | Resilient.



Observing with a new lens. | Using new tools. | Thinking and doing in new ways.

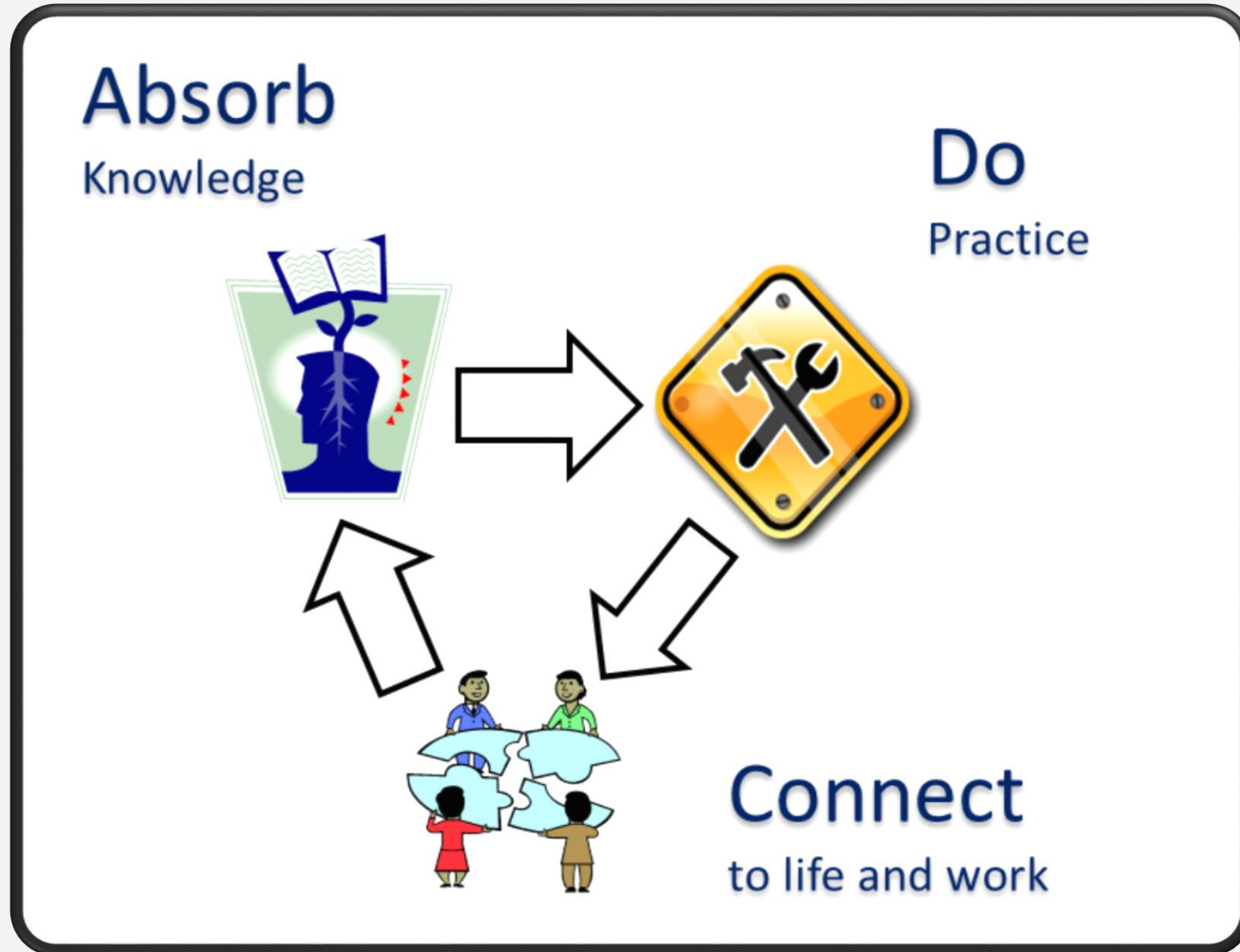


LEADING INTERPROFESSIONALLY®

EXPERIENCE THE PROCESS OF CROSSWALKING
IPEC® AND LEADERSHIP COMPETENCIES

#LEADINGINTEPROFESSIONALLY

ACTIVITY 1: IPEC[®] - LEADERSHIP CROSSWALK



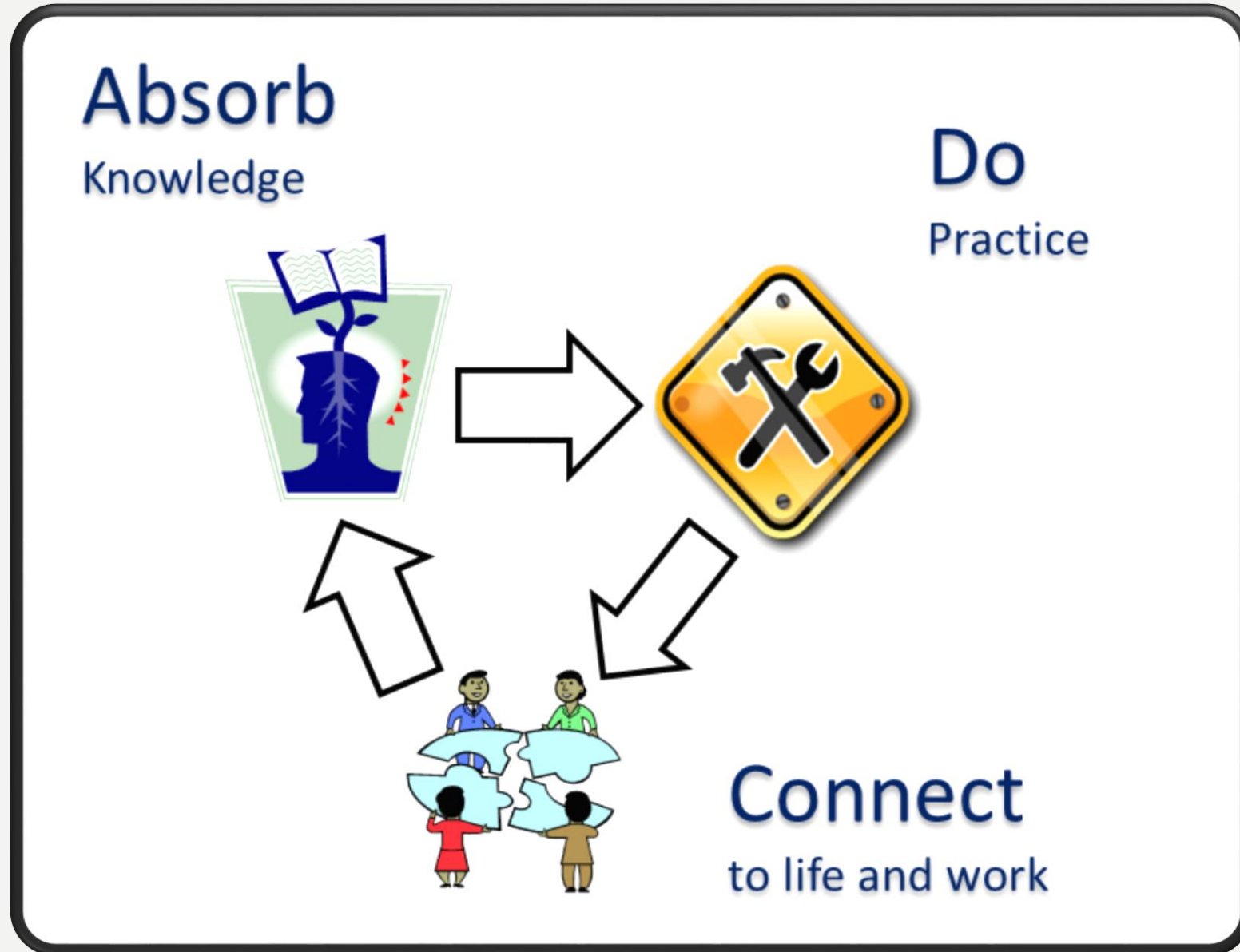


LEADING INTERPROFESSIONALLY®

CREATE A COMPETENCY-BASED LEARNING
ACTIVITY FOR LEADERSHIP PREPARATION

#LEADINGINTEPROFESSIONALLY

ACTIVITY 2: CREATE LEARNING ACTIVITY



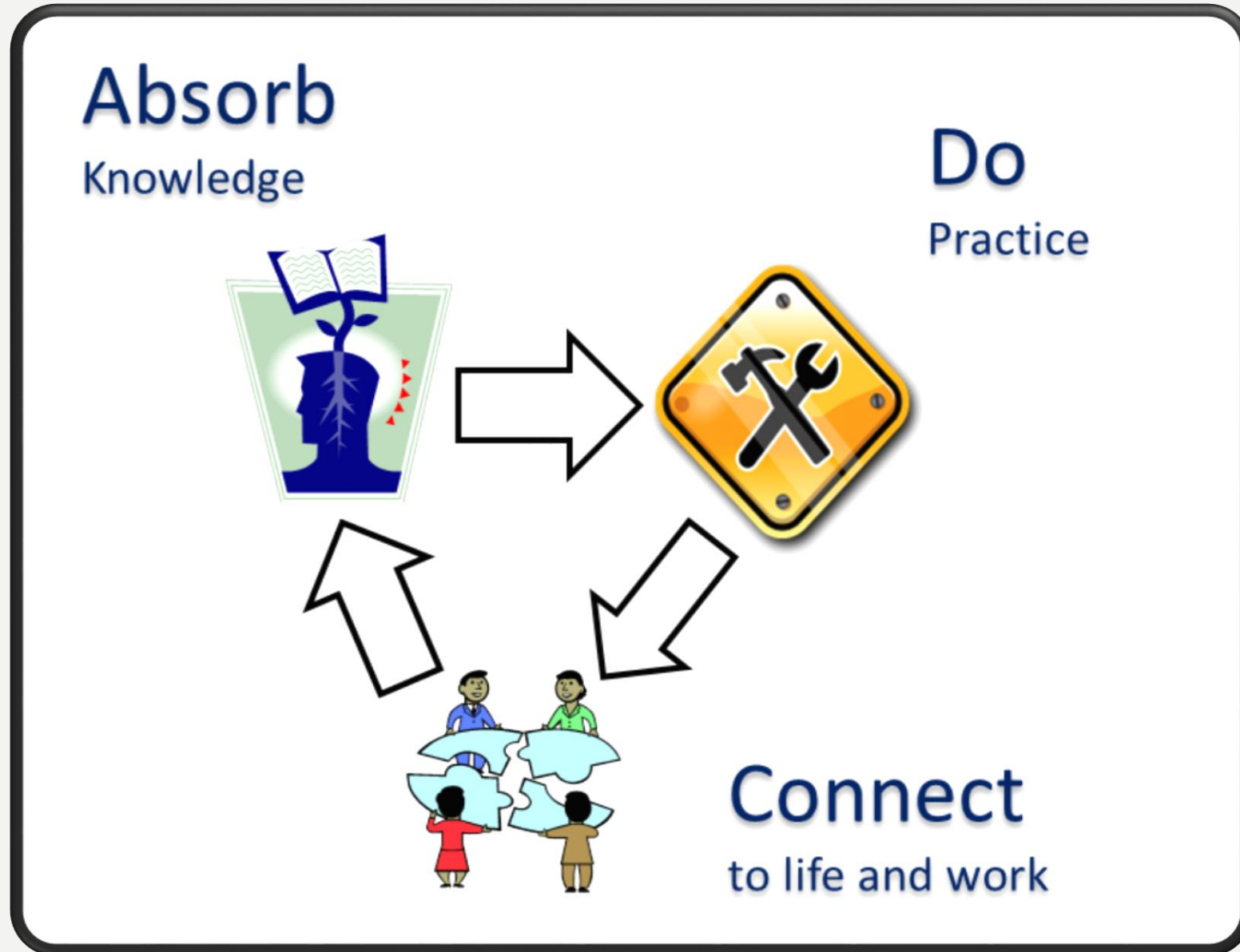


LEADING INTERPROFESSIONALLY

EXPLORE STRATEGIES TO BUILD INCREMENTAL
LEARNING ACTIVITIES THAT PREPARE STUDENTS
FOR LEADING INTERPROFESSIONALLY

#LEADINGINTEPROFESSIONALLY

ACTIVITY 3: EXPLORE STRATEGIES



LETS TALK





Q&A

COMMENTS



LEADING INTERPROFESSIONALLY©

THANK YOU!

KAREN.SAEWERT@ASU.EDU

GERRI.LAMB@ASU.EDU

BONNIE.ERVIN@ASU.EDU

#LEADINGINTEPROFESSIONALLY